

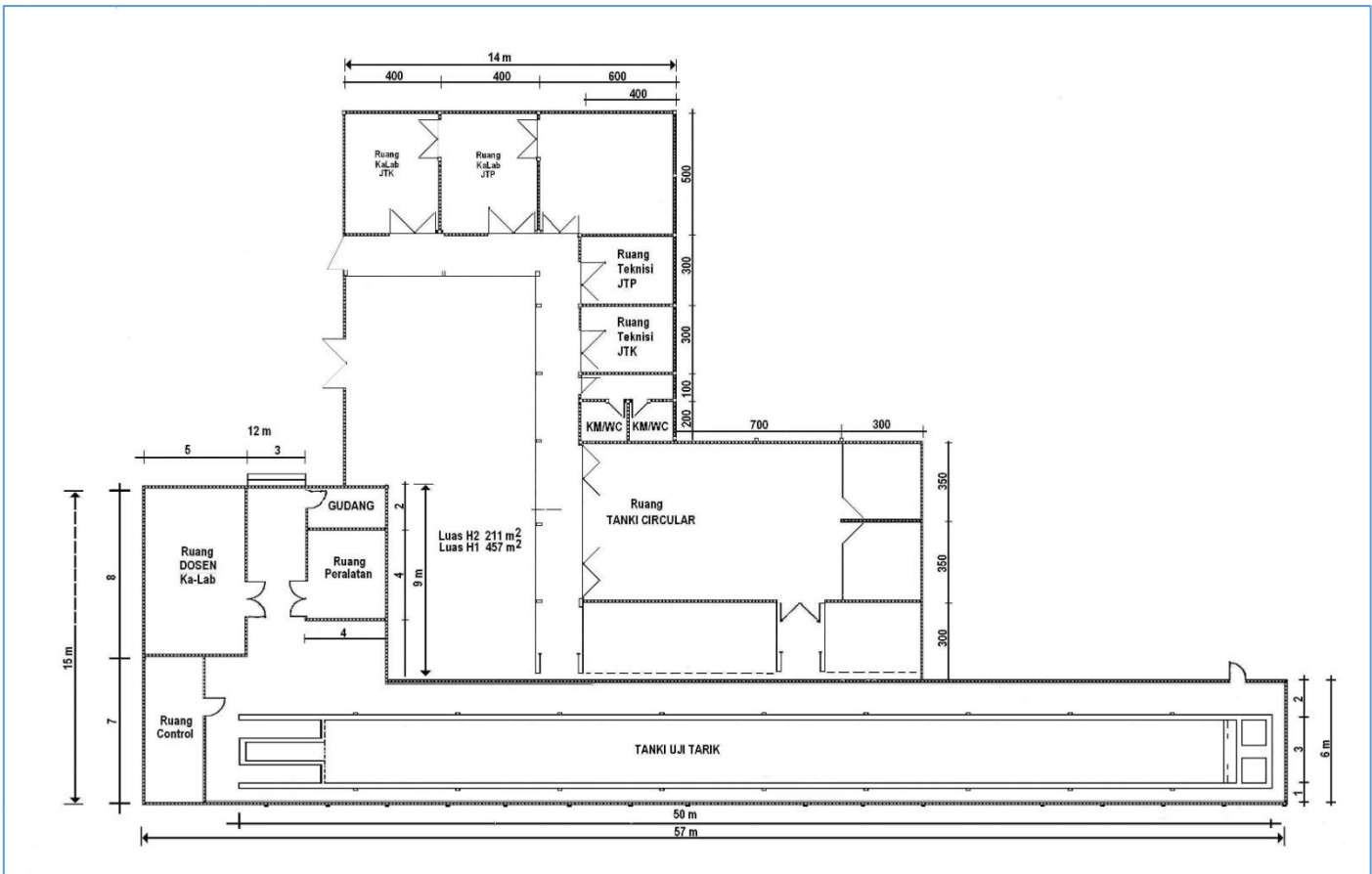
Name of organization Department of Naval Architecture, Institut Teknologi Sepuluh Nopember	Year of information updating 2024
Year established 1960	Year of joining the ITTC 2024?
Address ITS Campus, Sukolilo, Surabaya 60111, Indonesia	Status in the ITTC Regular member (to propose)
Contact details (phone, fax, e-mail) Telephone/Fax: +62-31-5964182 Email: tperkapalan@its.ac.id	Website www.its.ac.id/tkapal

Type of facility Towing tank	Year constructed/upgraded 1986
--	--

Name of facility ITS Towing Tank	Location (if different from the above address)
--	---

Main characteristics (dimensions of tank/basin/test section; for simulators: full mission, part task or desktop)
Length 50m, Width 3m, Depth 2m, Draught 1.8m. The facility can be used for resistance test and partly seakeeping test (following and head seas).

Drawings of facility
Top-view plan
Corss-section-view plan
Layout of the building/laboratory including towing tank (tanki uji tarik).



Photograph of towing tank with carriage



Detailed characteristics (carriages, wave/current/wind generators, instrumentations, etc.)

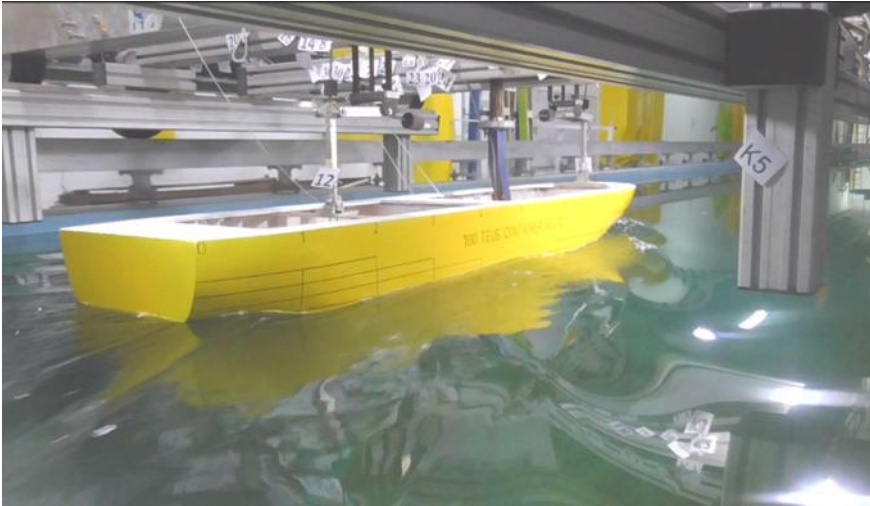
The carriage has maximum speed of 4 m/s but at present can only be run at 3 m/s.
The wave generator can produce wave with maximum amplitude of 10 cm with maximum period of 3s.
Instrumentations include load cells to measure drag/resistance, strip chart connected to data acquisition system (DAS), and camera to take photos of the running experiments.

Applications (Tests performed)

Picture taken from model test of 28m fast patrol boat.



Pictures taken from model test of 100 TEUS container vessel



Published description (Publications on this facility)

Information of the facilities is available through website (www.its.ac.id/tkapal)